

**University of Missouri System  
Undergraduate Financial Aid Summary Report  
FY2009-FY2013**

(Non-Resident Undergraduate Students)

Report Prepared by  
Dr. La Shonda Carter-Boone  
Senior Institutional Research Analyst

Office of Institutional Research and Planning  
714 Lewis Hall  
University of Missouri System

December 2013

IR&P 2013, Report 7

[Boonel@umsystem.edu](mailto:Boonel@umsystem.edu)  
573-884-3104



need. In FY09, 695 parents borrowed an average \$13,600 to meet their child's education expenses. Five years later, 1,135 parents borrowed approximately \$18,113 to cover these expenses. System-wide, the amount of PLUS loans distributed to non-resident undergraduates increased from \$9.5 million in FY09 to \$20.6 million in FY13 (Table 1.4).

Students with incomes less than \$40,000 tend to have the highest amount of financial need and receive larger total financial aid awards than higher income students. However, lower income students continue to have the largest amount of unmet financial need (Figure 1.4).

The unmet financial need of non-resident students increased in all income levels over the past five years (Figure 1.5).

## The contextual basis of financial aid distribution

Roughly 30% of non-resident undergraduates attending the University of Missouri pay the entire cost of attendance out-of-pocket. The majority of non-resident students receive some type of financial assistance to attend the University in the form of grants, scholarships, work study or loans. In addition, financial assistance comes from a wide variety of sources including the state and federal governments, profit and non-profit organizations, and the University (institutional gift aid). In addition, a significant amount of financial aid that is distributed is based on financial need (i.e. it is documented that the student's family cannot afford the entire cost of attendance). A student must complete a Free Application for Federal Student Aid (FAFSA) in order to determine the extent of financial need and the type and amount of aid based on need that can be awarded.

Many of the tables and figures throughout this report reference terms such as budgeted cost of attendance, financial need, grant aid, and unmet need. Assuming that a student has completed a FAFSA, Figure A.1 is provided to give an overview of how a student's financial aid package is determined.

|          |                                    |  |
|----------|------------------------------------|--|
| \$35,013 | Budgeted Cost of Attendance        | includes tuition & required fees, books, and living expenses |
| (5,186)  | Less: Expected Family Contribution |  |
| 29,827   |                                    |  |
|          |                                    |  |
|          |                                    |  |
|          |                                    |  |



## Section I

### System-wide Financial Aid Trends of Full-Time, Degree-Seeking Non-Resident Undergraduates from FY09 to FY13

**PLEASE NOTE:** The findings below highlight system-wide trends at the University of Missouri.

#### **1. How many non-resident students received aid and what type of aid was received?**

The total number of full-time, degree-seeking non-resident undergraduates steadily increased over the past five years from 5,014 to 7,639, an increase of over 52%. With this increase in enrollment, there has been an 84.2% increase in the number with financial need from 1,650 in FY09 to 3,040 in FY13 (Figure 1.1).

#### **2. Has grant aid kept pace with increases in tuition and required fees?**

Over the past five years tuition and required fees increased 17.3% and(n)]TJ 0 Tc 3(.e

income between \$20,000 and \$40,000. With the exception of students with family income between \$60K to \$80K, grant aid continues to cover a smaller percentage of the tuition and required fees (Table 1.2).

**6. How has the number of non-resident aid recipients with need changed by income level?**

Over the past five years the University experienced an increase in the number of non-resident undergraduate students that required financial assistance at all income levels (Figure 1.3).

**7. How do financial aid packages vary by income level?**

By income level, there is a difference in the structure of the financial aid packages and the way that financial need is met. For example, loans cover a larger percent cost of attendance for lower income non-resident students than higher income students. Also, even though lower-income students receive the most grant aid, and take out the most loans, they continue to have the largest amount of unmet financial need (Figure 1.4 and Table 1.3).

**8. For non-resident students that have need, what is the average amount of unmet financial need?**

Over the past five years, unmet financial need increased for non-resident students with need in all income levels. In FY13 the average amount of unmet financial need ranged from \$3,666 for students with family income greater than \$100K to \$16,253 for students with family income less than \$20K.

**9. Can families afford to pay the expected family contribution?**

On average, nearly all families borrow a portion of the amount that it is expected to pay out-of-pocket (i.e. the expected family contribution). However, families with higher incomes borrow a larger percentage of what they are expected to pay. For example, in FY13 students with family income greater than \$100K borrowed approximately 23% of the expected family contribution (Table 1.5).

|                                      | FY09         | FY10       | FY11         | FY12         | FY13         | 5-yr<br># Change | 5-yr<br>% Change |
|--------------------------------------|--------------|------------|--------------|--------------|--------------|------------------|------------------|
| Completed FAFSA, did not have a need | 857          | 885        | 931          | 1,009        | 1,200        | 343              | 40.0%            |
| Grant aid, no FAFSA                  | <u>1,046</u> | <u>995</u> | <u>1,008</u> | <u>1,019</u> | <u>1,171</u> | <u>125</u>       | 12.0%            |
| Aid recipients with no need          | 1,903        | 1,880      | 1,939        | 2,028        | 2,371        |                  | 1,939            |





**Table 1.1**

**Average Institutional Grant Awards Distributed to Non-Resident, Full-time, Degree-Seeking Undergraduates at the University of Missouri System, FY09 - FY13**

| Students with Need  | FY09         |                | FY10         |                | FY11         |                | FY12         |                | FY13         |                |
|---------------------|--------------|----------------|--------------|----------------|--------------|----------------|--------------|----------------|--------------|----------------|
|                     | # of Awards  | Average Award  | # of Awards  | Average Award  | # of Awards  | Average Award  | # of Awards  | Average Award  | # of Awards  | Average Award  |
| Type of Award Need* | 504          | \$2,978        | 575          | \$2,626        | 536          | \$3,054        | 650          | \$3,249        | 616          | \$3,726        |
| Merit               | 997          | \$5,760        | 1,202        | \$5,910        | 1,415        | \$5,568        | 1,570        | \$5,398        | 1,864        | \$5,124        |
| Other**             | 165          | \$6,727        | 202          | \$7,212        | 220          | \$6,825        | 204          | \$6,792        | 229          | \$7,003        |
| <b>Total</b>        | <b>1,666</b> | <b>\$5,014</b> | <b>1,979</b> | <b>\$5,088</b> | <b>2,171</b> | <b>\$5,075</b> | <b>2,424</b> | <b>\$4,939</b> | <b>2,709</b> | <b>\$4,965</b> |

| Students without Need | FY09         |                | FY10         |                | FY11         |                | FY12         |                | FY13         |                |
|-----------------------|--------------|----------------|--------------|----------------|--------------|----------------|--------------|----------------|--------------|----------------|
|                       | # of Awards  | Average Award  | # of Awards  | Average Award  | # of Awards  | Average Award  | # of Awards  | Average Award  | # of Awards  | Average Award  |
| Type of Award Merit   | 1,386        | \$4,939        | 1,311        | \$5,095        | 1,365        | \$5,049        | 1,451        | \$4,645        | 1,697        | \$4,621        |
| Other**               | 306          | \$6,741        | 314          | \$7,235        | 273          | \$7,339        | 271          | \$8,147        | 312          | \$8,013        |
| <b>Total</b>          | <b>1,692</b> | <b>\$5,265</b> | <b>1,625</b> | <b>\$5,508</b> | <b>1,638</b> | <b>\$5,431</b> | <b>1,722</b> | <b>\$5,196</b> | <b>2,009</b> | <b>\$5,148</b> |

\*Institutional grant aid awarded to students with need includes both need and merit-based aid.

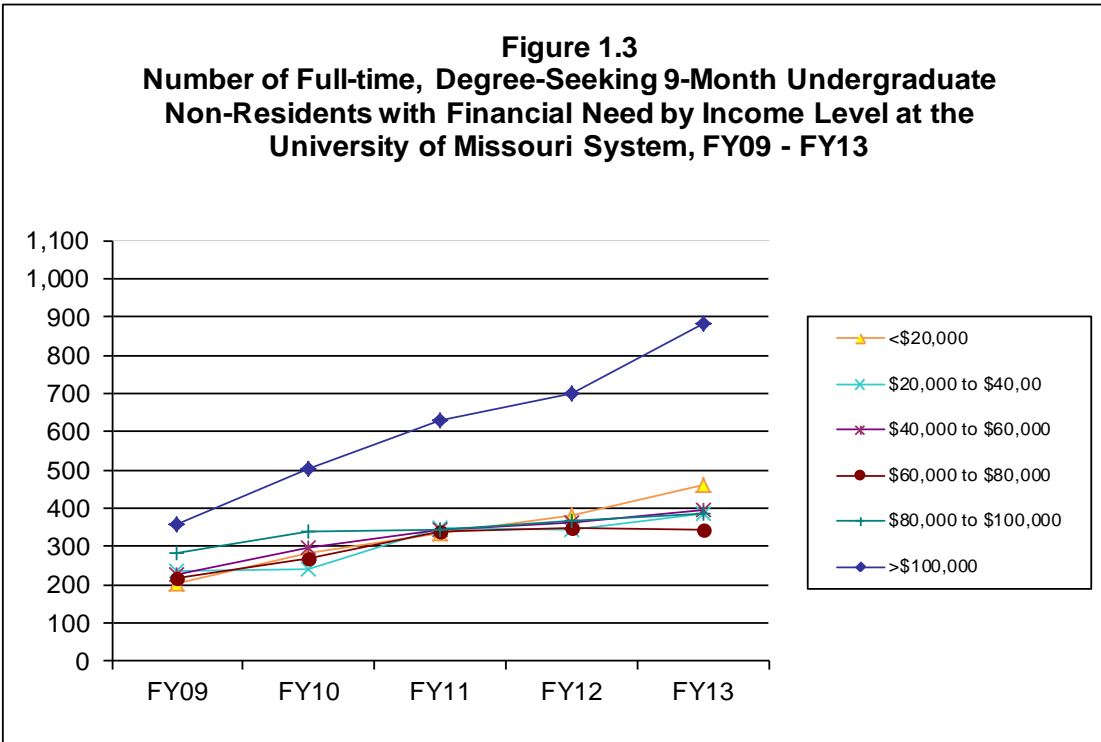
\*\*Includes athletic aid and tuition waivers.

Source: UIDS, PeopleSoft

IR&PLCB 12/13

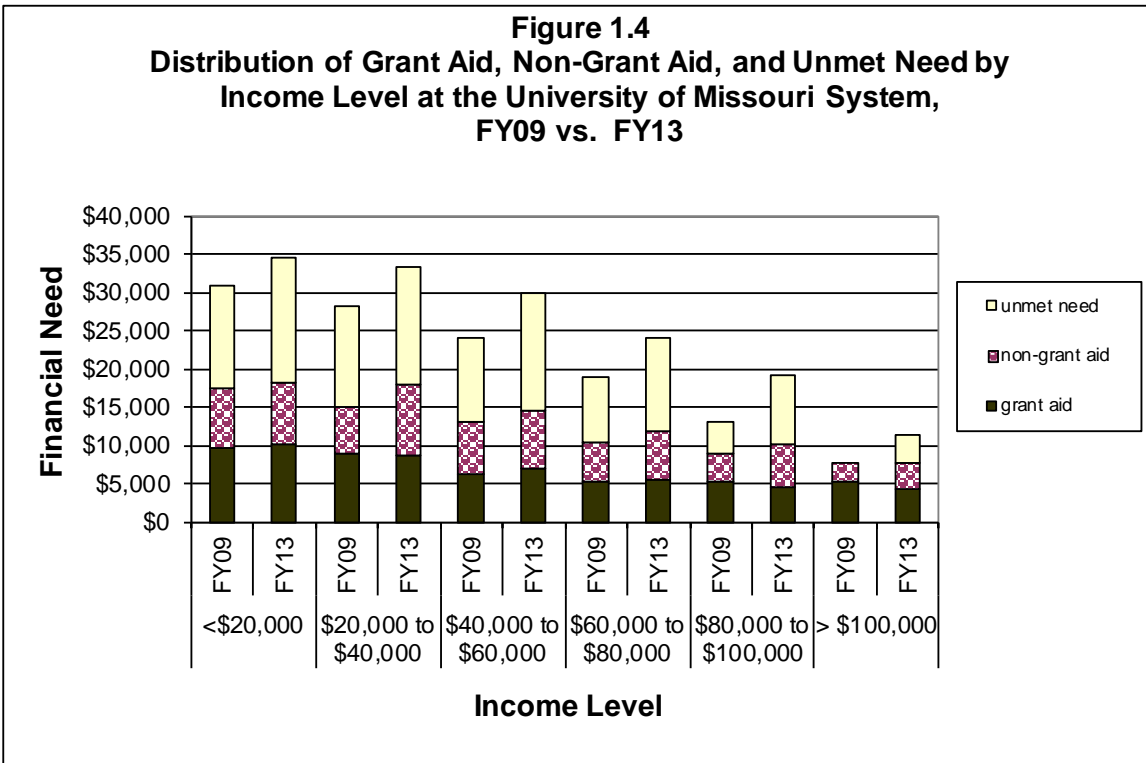


**Figure 1.3**  
**Number of Full-time, Degree-Seeking 9-Month Undergraduate Non-Residents with Financial Need by Income Level at the University of Missouri System, FY09 - FY13**



Source: UIDS, PeopleSoft  
 IR&P/LCB 12/13

**Figure 1.4**  
**Distribution of Grant Aid, Non-Grant Aid, and Unmet Need by Income Level at the University of Missouri System, FY09 vs. FY13**



Source: UIDS, PeopleSoft  
 IR&P/LCB 12/13







## **Section II**

### **Campus-Level Financial Aid Trends of Full-Time, Degree-Seeking Non-Resident Undergraduates from FY09 to FY13**

**UMn**



|  |
|--|
|  |
|  |
|  |
|  |
|  |
|  |

|  | FY09         | FY10         | FY11         | FY12         | FY13         | 5-yr<br># Change | 5-yr<br>% Change |
|--|--------------|--------------|--------------|--------------|--------------|------------------|------------------|
| Completed FAFSA, did not have a need           | 645          | 733          | 768          | 885          | 1,039        | 394              | 61.1%            |
| Grant aid, no FAFSA                            | <u>684</u>   | <u>655</u>   | <u>676</u>   | <u>720</u>   | <u>772</u>   | <u>88</u>        | 12.9%            |
| Aid recipients with no need                    | 1,329        | 1,388        | 1,444        | 1,605        | 1,811        | 482              | 36.3%            |
| Aid recipients with need*                      | 1,045        | 1,322        | 1,667        | 1,952        | 2,234        | 1,189            | 113.8%           |
| Full pay / No aid                              | <u>1,140</u> | <u>1,222</u> | <u>1,446</u> | <u>1,504</u> | <u>1,764</u> | <u>624</u>       | 54.7%            |
| Total of all full-time, Degree-Seeking Non-Res | <u>3,154</u> | 3,932        | 4,557        | 5,061        | 5,809        | 2,295            | 65.3%            |

\* All aid recipients with need completed a FAFSA and were not expected to pay the entire cost of attendance.

Source: UIDS, EMSAS, and PeopleSoft  
IR&P/LCB 12/13

**Figure 2.2**  
**Tuition and Required Fees vs. 9-Month Cost of Attendance and Grant Aid for**  
**Full-time Undergraduate Non-Residents at the**  
**University of Missouri**



|                             | FY09     | FY10     | FY11     | FY12     | FY13     | 5-yr<br># Change | 5-yr<br>% Change |
|-----------------------------|----------|----------|----------|----------|----------|------------------|------------------|
| Budgeted Cost of Attendance | \$30,379 | \$30,552 | \$31,861 | \$33,579 | \$34,577 | \$4,198          | 13.8%            |
| Tuition & Required Fees     | \$19,558 | \$19,592 | \$20,516 | \$21,784 | \$23,366 | \$3,808          | 19.5%            |
| Average Grant Aid           | \$4,147  | \$4,378  | \$4,275  | \$4,235  | \$4,130  | -\$17            | -0.4%            |

Source: UIDS, IPEDS Institutional Characteristics, PeopleSoft  
 IR&P/LCB 12/13

**Table 2.1**

Students with Need

| Type of Award | # of Awards | Average Award | # of Awards | Average Award | # of Awards | Average Award | # of Awards | Average Award | # of Awards | Average Award |
|---------------|-------------|---------------|-------------|---------------|-------------|---------------|-------------|---------------|-------------|---------------|
| Need          | 403         | \$3,294       | 491         | \$2,862       | 453         | \$3,344       | 570         | \$3,492       | 504         | \$4,171       |
| Merit         | 565         | \$3,792       | 702         | \$3,708       | 860         | \$3,537       | 1,051       | \$3,444       | 1,266       | \$3,188       |
| Other**       | 57          | \$5,078       | 82          | \$6,909       | 83          | \$5,267       | 81          | \$6,315       | 103         | \$6,501       |
| Total         | 1,025       | \$3,923       | 1,275       | \$3,923       | 1,396       | \$3,923       | 1,702       | \$3,923       | 1,873       | \$3,923       |







**Table 2.5**

|   | FY09         | FY10         | FY11         | FY12         | FY13         | FY09 | FY10 | FY11             | FY12   | FY13 | # Change<br>FY09-FY13 | % Change<br>FY09-FY13 |        |     |
|---|--------------|--------------|--------------|--------------|--------------|------|------|------------------|--------|------|-----------------------|-----------------------|--------|-----|
| <b>Total Enrolled for 9 months (N)</b>                          | 113          | 165          | 196          | 245          | 320          |      |      |                  |        |      | 207                   | 183%                  |        |     |
| Cost of Attendance  | \$30,555     | \$30,283     | \$31,935     | \$34,043     | \$34,798     |      |      |                  |        |      | \$4,243               | 14%                   |        |     |
| Less Expected Family Contribution*                              | <u>695</u>   | <u>591</u>   | <u>683</u>   | <u>440</u>   | <u>362</u>   | 2%   | 2%   | 2%               | 1%     | 1%   | -333                  | -48%                  |        |     |
| Financial Need  | 29,860       | 29,692       | 31,252       | 33,603       | 34,435       | 98%  | 98%  | 98%              | 99%    | 99%  | 4,575                 | 15%                   |        |     |
| Less Grant Aid  | 8,215        | 9,146        | 9,492        | 8,537        | 8,958        | 27%  | 30%  | 30%              | 25%    | 26%  | 743                   | 9%                    |        |     |
| Unmet Need  | \$21,645     | \$20,546     | \$21,760     | \$25,065     | \$25,477     | 71%  | 68%  | 68%              | 74%    | 73%  | 3,832                 | 18%                   |        |     |
| <b>% Grant Aid that Met Financial Need</b>                      | <b>28%</b>   | <b>31%</b>   | <b>30%</b>   | <b>25%</b>   | <b>26%</b>   |      |      |                  |        |      |                       |                       |        |     |
| <b>Non-Grant Sources to Meet Remaining Unmet Financial Need</b> |              |              |              |              |              |      |      |                  |        |      |                       |                       |        |     |
| College Work Study  | \$279        | \$200        | \$329        | \$327        | \$297        | 1%   | 1%   | 1%               | 1%     | 1%   | 18                    | 6%                    |        |     |
| Need-based Loans  | 3,155        | 3,625        | 3,693        | 3,878        | 4,013        | 10%  | 12%  | 12%              | 11%    | 12%  | 858                   | 27%                   |        |     |
| Non-Need Based Loans  | 4,447        | 4,623        | 4,642        | 4,739        | 4,169        | 15%  | 15%  | 15%              | 14%    | 12%  | -278                  | -6%                   |        |     |
| Remaining Unmet Need  | \$13,764     | \$12,098     | \$13,096     | \$16,122     | \$16,999     | 45%  | 40%  | 41%              | 47%    | 49%  | 3,235                 | 24%                   |        |     |
| *Amount Borrowed to meet EFC                                    | \$105        | \$379        | \$377        | \$217        | \$141        | 0%   | 1%   | 1%               | 1%     | 0%   | 36                    | 34%                   |        |     |
|   | FY09         | FY10         | FY11         | FY12         | FY13         | FY09 | FY10 | FY11             | FY12   | FY13 | # Change<br>FY09-FY13 | % Change<br>FY09-FY13 |        |     |
| <b>Total Enrolled for 9 months (N)</b>                          | 152          | 164          | 254          | 268          | 312          |      |      |                  |        |      | 160                   | 105%                  |        |     |
| Cost of Attendance  | \$30,620     | \$30,763     | \$32,053     | \$33,657     | \$34,864     |      |      |                  |        |      | \$4,244               | 14%                   |        |     |
| Less Expected Family Contribution*                              | <u>2,965</u> | <u>1,963</u> | <u>2,021</u> | <u>1,269</u> | <u>1,586</u> | 10%  | 6%   | 6%               | 4%     | 5%   | -1,379                | -47%                  |        |     |
| Financial Need  | 27,655       | 28,800       | 30,032       | 32,388       | 33,278       | 90%  | 94%  | 94%              | 96%    | 95%  | 5,623                 | 20%                   |        |     |
| Less Grant Aid  | 7,366        | 8,467        | 8,324        | 8,060        | 8,179        | 24%  | 28%  | 26%              | 24%    | 23%  | 813                   | 11%                   |        |     |
| Unmet Need  | \$20,289     | \$20,333     | \$21,708     | \$24,328     | \$25,099     | 66%  | 66%  | 68%              | 72%    | 72%  | 4,810                 | 24%                   |        |     |
| <b>% Grant Aid that Met Financial Need</b>                      | <b>27%</b>   | <b>29%</b>   | <b>28%</b>   | <b>25%</b>   | <b>25%</b>   |      |      |                  |        |      |                       |                       |        |     |
| <b>Non-Grant Sources to Meet Remaining Unmet Financial Need</b> |              |              |              |              |              |      |      |                  |        |      |                       |                       |        |     |
| College Work Study  | \$418        | \$416        | \$262        | \$332        | \$264        | 1%   | 1%   | 1%               | 1%     | 1%   | -154                  | -37%                  |        |     |
| Need-based Loans  | 3,384        | 3,920        | 3,688        | 3,791        | 3,908        | 11%  | 13%  | 12%              | 11%    | 11%  | 524                   | 15%                   |        |     |
| Non-Need Based Loans  | 2,552        | 4,513        | 5,082        | 5,212        | 5,163        | 8%   | 15%  | 16%              | 15%    | 15%  | 2,611                 | 102%                  |        |     |
| Remaining Unmet Need  | \$13,935     | \$11,484     | \$12,676     | \$14,993     | \$15,764     | 46%  | 37%  | \$1829-48(810)TJ | 6.2434 | -0 0 | 6.4882                | -0 0                  | 6.4882 | 373 |

**Table 2.5 (Continued)**

|  | FY09          | FY10          | FY11          | FY12          | FY13          | FY09 | FY10 | FY11 | FY12 | FY13 | # Change<br>FY09-FY13 | % Change<br>FY09-FY13 |
|--|---------------|---------------|---------------|---------------|---------------|------|------|------|------|------|-----------------------|-----------------------|
| <b>Total Enrolled for 9 months (N)</b>     | 149           | 183           | 242           | 260           | 271           |      |      |      |      |      | 122                   | 82%                   |
| Cost of Attendance                         | \$30,522      | \$30,844      | \$31,823      | \$33,185      | \$34,515      |      |      |      |      |      | \$3,993               | 13%                   |
| Less Expected Family Contribution*         | <u>11,697</u> | <u>11,273</u> | <u>10,497</u> | <u>10,954</u> | <u>10,798</u> | 38%  | 37%  | 33%  | 33%  | 31%  | -899                  | -8%                   |
| Financial Need                             | 18,825        | 19,571        | 21,326        | 22,231        | 23,717        | 62%  | 63%  | 67%  | 67%  | 69%  | 4,892                 | 26%                   |
| Less Grant Aid                             | 4,051         | 4,126         | 3,605         | 4,320         | 3,862         | 13%  | 13%  | 11%  | 13%  | 11%  | -189                  | -5%                   |
| Unmet Need                                 | \$14,774      | \$15,445      | \$17,721      | \$17,911      | \$19,855      | 48%  | 50%  | 56%  | 54%  | 58%  | 5,081                 | 34%                   |
| <b>% Grant Aid that Met Financial Need</b> | <b>22%</b>    | <b>21%</b>    | <b>17%</b>    | <b>19%</b>    | <b>16%</b>    |      |      |      |      |      |                       |                       |
| <b>Non-Grant Sources to Meet</b>           |               |               |               |               |               |      |      |      |      |      |                       |                       |
| <b>Remaining Unmet Financial Need</b>      |               |               |               |               |               |      |      |      |      |      |                       |                       |
| College Work Study                         | \$277         | \$177         | \$171         | \$164         | \$59          | 1%   | 1%   | 1%   | 0%   | 0%   | -218                  | -79%                  |
| Need-based Loans                           | 3,259         | 3,471         | 3,565         | 3,706         | 3,617         | 11%  | 11%  | 11%  | 11%  | 10%  | 358                   | 11%                   |
| Non-Need Based Loans                       | 2,292         | 3,248         | 3,550         | 3,274         | 2,920         | 8%   | 11%  | 11%  | 10%  | 8%   | 628                   | 27%                   |
| Remaining Unmet Need                       | \$8,946       | \$8,549       | \$10,435      | \$10,767      | \$13,258      | 29%  | 28%  | 33%  | 32%  | 38%  | 4,312                 | 48%                   |
| *Amount Borrowed to meet EFC               | \$4,784       | \$5,364       | \$4,943       | \$4,968       | \$4,800       | 16%  | 17%  | 16%  | 15%  | 14%  | 16                    | 0%                    |
|  | FY09          | FY10          | FY11          | FY12          | FY13          | FY09 | FY10 | FY11 | FY12 | FY13 | # Change<br>FY09-FY13 | % Change<br>FY09-FY13 |
| <b>Total Enrolled for 9 months (N)</b>     | 178           | 222           | 237           | 269           | 277           |      |      |      |      |      | 99                    |                       |



|   | FY09               | FY10      | FY11      | FY12      | FY13      | 5-yr<br># Change | 5-yr<br>% Change |
|---|--------------------|-----------|-----------|-----------|-----------|------------------|------------------|
| Completed FAFSA, did not have a need            | 32                 | 18        | 24        | 23        | 24        | -8               | -25.0%           |
| Grant aid, no FAFSA                             | <u>70</u>          | <u>76</u> | <u>77</u> | <u>68</u> | <u>63</u> | <u>-7</u>        | -10.0%           |
| Aid recipients with no need                     | 102                | 94        | 101       | 91        | 87        | -15              | -14.7%           |
| Aid recipients with need*                       | 165                | 210       | 221       | 210       | 202       | 37               | 22.4%            |
| Full pay / No aid                               | 18                 | 23        | 25        | 26        | 30        | 12               | 66.7%            |
| Total of all full- time, Degree-Seeking Non-Res | <del>285</del> 327 | 327       | 347       | 327       | 319       | 34               | 11.9%            |

\* All aid recipients with need completed a FAFSA and were not expected to pay the entire cost of attendance.

|                             | FY09     | FY10     | FY11     | FY12     | FY13     | 5-yr<br># Change | 5-yr<br>% Change |
|-----------------------------|----------|----------|----------|----------|----------|------------------|------------------|
| Budgeted Cost of Attendance | \$35,185 | \$35,824 | \$36,524 | \$38,245 | \$35,405 | \$220            | 0.6%             |
| Tuition & Required Fees     | \$19,364 | \$19,364 | \$20,191 | \$21,197 | \$21,833 | \$2,469          | 12.8%            |
| Average Grant Aid           | \$14,002 | \$13,360 | \$13,530 | \$13,413 | \$13,492 | -\$510           | -3.6%            |

**Table 3.1**

**Table 3.3**

**Total Financial Aid as % of Cost of Attendance by Income Level at the University of Missouri-Kansas City, FY09 & FY13**

| Income Level          | FY09                         |          |            |       |             | FY13                         |          |            |       |             |
|-----------------------|------------------------------|----------|------------|-------|-------------|------------------------------|----------|------------|-------|-------------|
|                       | % COA Met by Source of Aid   |          |            |       | % Unmet COA | % COA Met by Source of Aid   |          |            |       | % Unmet COA |
|                       | Expected Family Contribution | Gift Aid | Work Study | Loans |             | Expected Family Contribution | Gift Aid | Work Study | Loans |             |
| <\$20,000             | 3%                           | 41%      | 2%         | 21%   | 32%         | 1%                           | 42%      | 0%         | 21%   | 35%         |
| \$20,000 to \$40,00   | 8%                           | 45%      | 2%         | 17%   | 28%         | 6%                           | 37%      | 0%         | 17%   | 40%         |
| \$40,000 to \$60,000  | 21%                          | 36%      | 1%         | 9%    | 33%         | 16%                          | 44%      | 1%         | 15%   | 24%         |
| \$60,000 to \$80,000  | 39%                          | 37%      | 0%         | 16%   | 8%          | 26%                          | 36%      | 0%         | 16%   | 22%         |
| \$80,000 to \$100,000 | 50%                          | 23%      | 1%         | 15%   | 12%         | 41%                          | 37%      | 0%         | 11%   | 11%         |
| >\$100,000            | 72%                          | 43%      | 0%         | 5%    | 0%          | 80%                          | 32%      | 0%         | 4%    | 0%          |

Source: UIDS, PeopleSoft  
IR&P/LCB 12/13





**Table 3.5**

|  | FY09                      | FY10       | FY11         | FY12       | FY13       | FY09 | FY10 | FY11 | FY12 | FY13 | # Change<br>FY09-FY13 | % Change<br>FY09-FY13 |
|--|---------------------------|------------|--------------|------------|------------|------|------|------|------|------|-----------------------|-----------------------|
| <b>Total Enrolled for 9 months (N)</b>     | 46                        | 61         | 71           | 68         | 75         |      |      |      |      |      | 29                    | 63%                   |
| Cost of Attendance                         | \$34,851                  | \$35,675   | \$35,725     | \$38,172   | \$35,215   |      |      |      |      |      | \$364                 | 1%                    |
| Less Expected Family Contribution*         | <u>938</u>                | <u>569</u> | <u>1,336</u> | <u>696</u> | <u>519</u> | 3%   | 2%   | 4%   | 2%   | 1%   | -419                  | -45%                  |
| Financial Need                             | 33,913                    | 35,106     | 34,389       | 37,476     | 34,696     | 97%  | 98%  | 96%  | 98%  | 99%  | 783                   | 2%                    |
| Less Grant Aid                             | 14,452                    | 15,153     | 14,420       | 14,179     | 14,805     | 41%  | 42%  | 40%  | 37%  | 42%  | 353                   | 2%                    |
| Unmet Need                                 | \$19,461                  | \$19,953   | \$19,969     | \$23,297   | \$19,891   | 56%  | 56%  | 56%  | 61%  | 56%  | 430                   | 2%                    |
| <b>% Grant Aid that Met Financial Need</b> | <b>43%</b>                | <b>43%</b> | <b>42%</b>   | <b>38%</b> | <b>43%</b> |      |      |      |      |      |                       |                       |
| <b>Non-Grant Sources to Meet</b>           |                           |            |              |            |            |      |      |      |      |      |                       |                       |
| <b>Remaining Unmet Financial Need</b>      |                           |            |              |            |            |      |      |      |      |      |                       |                       |
| College Work Study                         | \$798,939 re W n BT /#156 |            |              |            |            |      |      |      |      |      |                       |                       |

ec(a)-i5(e)-n







|   | FY09         | FY10       | FY11       | FY12       | FY13       | 5-yr<br># Change | 5-yr<br>% Change |
|---|--------------|------------|------------|------------|------------|------------------|------------------|
| Completed FAFSA, did not have a need            | 169          | 124        | 127        | 90         | 125        | -44              | -26.0%           |
| Grant aid, no FAFSA                             | <u>220</u>   | <u>186</u> | <u>180</u> | <u>150</u> | <u>241</u> | <u>21</u>        | 9.5%             |
| Aid recipients with no need                     | 389          | 310        | 307        | 240        | 366        | -23              | -5.9%            |
| Aid recipients with need*                       | 339          | 434        | 479        | 420        | 522        | 183              | 54.0%            |
| Full pay / No aid                               | 150          | 178        | 215        | 380        | 187        | 37               | 24.7%            |
| Total of all full- time, Degree-Seeking Non-Res | <u>1,078</u> | 922        | 1,001      | 1,040      | 1,075      | 197              | 22.4%            |

\* All aid recipients with need completed a FAFSA and were not expected to pay the entire cost of attendance.

Source: UIDS, EMSAS, and PeopleSoft  
IR&P/LCB 12/13





**Table 4.3**





**Table 4.5**

|                                 | FY09     | FY10     | FY11     | FY12 | FY13 | FY09 | FY010 | FY011 | FY012 | FY013 | # Change<br>FY09-FY13 | % Change<br>FY09-FY13 |
|---------------------------------|----------|----------|----------|------|------|------|-------|-------|-------|-------|-----------------------|-----------------------|
| Total Enrolled for 9 months (N) | 27       | 40       | 39       | 52   | 52   |      |       |       |       |       | 25                    | 93%                   |
| Cost of Attendance              | \$29,098 | \$31,456 | \$31,128 |      |      |      |       |       |       |       |                       |                       |

**Table 4.5 (Continued)**

|  | FY09          | FY10          | FY11         | FY12             | FY13                   | FY09     | FY010          | FY011    | FY012   | FY013         | # Change     | % Change  |
|--|---------------|---------------|--------------|------------------|------------------------|----------|----------------|----------|---------|---------------|--------------|-----------|
|  |               |               |              |                  |                        |          |                |          |         |               | FY09-FY13    | FY09-FY13 |
| <b>Total Enrolled for 9 months (N)</b> | 48            | 61            | 73           | 62               | 54                     |          |                |          |         |               | 6            | 13%       |
| Cost of Attendance                     | \$28,824      | \$31,268      | \$31,951     | \$34,812         | \$36,169               | 1.00(38) | 900401#49 0 Td | (65%)Tj  | 3.61381 | 1 6.6930 u Tm | (4028)-4     | 25%       |
| Less Expected Family Contribution*     | <u>11,606</u> | <u>11,040</u> | <u>9,572</u> | <u>9,569</u>     | <u>11,255</u>          | 40%      | 35%            | 30%      | 27%     | 31%           | -351         | -3%       |
| Financial Need                         | 17,218        | 20,228        | 22,379       | 25,243           | 24,914                 | 60%      | 65%            | 70%      | 73%     | 69%           | 7,696        | 45%       |
| Less Grant Aid                         | 6,401         | 7,603         | 7,97d        | [(4)119.462 0 Td | [(17,-)487001 1.001 re | u.048    | Tw             | -68.8025 | Tw      | 5.923 0 Tj    | 3.6157.327 9 |           |



|   | FY09       | FY10      | FY11      | FY12      | FY13      | 5-yr<br># Change | 5-yr<br>% Change |
|---|------------|-----------|-----------|-----------|-----------|------------------|------------------|
| Completed FAFSA, did not have a need            | 11         | 10        | 12        | 11        | 12        | 1                | 9.1%             |
| Grant aid, no FAFSA                             | <u>72</u>  | <u>78</u> | <u>75</u> | <u>81</u> | <u>95</u> | <u>23</u>        | 31.9%            |
| Aid recipients with no need                     | 83         | 88        | 87        | 92        | 107       | 24               | 28.9%            |
| Aid recipients with need*                       | 101        | 95        | 103       | 98        | 82        | -19              | -18.8%           |
| Full pay / No aid                               | 153        | 181       | 224       | 242       | 247       | 94               | 61.4%            |
| Total of all full- time, Degree-Seeking Non-Res | <u>337</u> | 364       | 414       | 432       | 436       | 99               | 29.4%            |
| W   | 6          | 4         |           | 7         |           | 2                |                  |

|                             | FY09     | FY10     | FY11     | FY12     | FY13     | 5-yr<br># Change | 5-yr<br>% Change |
|-----------------------------|----------|----------|----------|----------|----------|------------------|------------------|
| Budgeted Cost of Attendance | \$34,311 | \$35,411 | \$37,174 | \$38,049 | \$35,639 | \$1,328          | 3.9%             |
| Tuition & Required Fees     | \$19,686 | \$19,686 | \$20,220 | \$21,206 | \$22,883 | \$3,197          | 16.2%            |
| Average Grant Aid           | \$5,333  | \$5,056  | \$6,118  | \$6,447  | \$6,283  | \$949            | 17.8%            |

Source: UIDS, IPEDS Institutional Characteristics, PeopleSoft  
IR&P/LCB 12/13

**Table 5.1**

Students with Need

**Table 5.3****Total Financial Aid as % of Cost of Attendance by Income Level at the University of Missouri-St. Louis, FY09 & FY13**

| Income Level          | FY09                         |          |            |       |             | FY13                         |          |            |       |             |
|-----------------------|------------------------------|----------|------------|-------|-------------|------------------------------|----------|------------|-------|-------------|
|                       | % COA Met by Source of Aid   |          |            |       | % Unmet COA | % COA Met by Source of Aid   |          |            |       | % Unmet COA |
|                       | Expected Family Contribution | Gift Aid | Work Study | Loans |             | Expected Family Contribution | Gift Aid | Work Study | Loans |             |
| <\$20,000             | 2%                           | 16%      | 1%         | 17%   | 65%         | 2%                           | 17%      | 0%         | 21%   | 61%         |
| \$20,000 to \$40,00   | 9%                           | 13%      | 0%         | 15%   | 64%         | 4%                           | 25%      | 0%         | 13%   | 58%         |
| \$40,000 to \$60,000  | 14%                          | 10%      | 0%         | 16%   | 59%         | 16%                          | 19%      | 0%         | 5%    | 61%         |
| \$60,000 to \$80,000  | 32%                          | 19%      | 0%         | 10%   | 39%         | 28%                          | 18%      | 0%         | 16%   | 37%         |
| \$80,000 to \$100,000 | 50%                          | 10%      | 0%         | 7%    | 33%         | 43%                          | 24%      | 0%         | 4%    | 30%         |
| >\$100,000            | 81%                          | 17%      | 0%         | 6%    | 0%          | 71%                          | 13%      | 0%         | 6%    | 10%         |

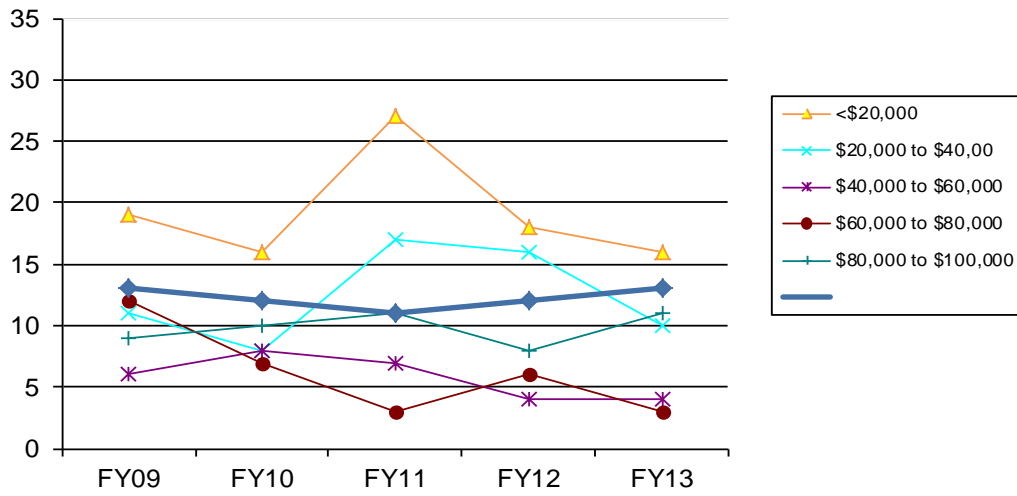
Source: UIDS, PeopleSoft  
IR&P/LCB 12/13

**Table 5.4**

|              | FY09 |          | FY10 |          | FY11 |          | FY12 |          | FY13 |          |
|--------------|------|----------|------|----------|------|----------|------|----------|------|----------|
|              | N    | Mean     | N    | Mean     | N    | Mean     | N    | Mean     | N    | Mean     |
| With Need    | 14   | \$11,530 | 15   | \$13,941 | 17   | \$13,076 | 18   | \$12,152 | 14   | \$13,677 |
| Without Need | 2    | 10,476   | 3    | 15,419   | 3    | 13,824   | 3    | 15,196   | 2    | 12,999   |
|              | 16   | \$11,399 | 18   | \$14,187 | 20   | \$13,188 | 21   | \$12,587 | 16   | \$13,592 |

Source: UIDS, PeopleSoft  
IR&P/LCB 12/13

**Figure 5.3**  
**Number of Full-time, Degree-Seeking 9-Month Undergraduate**  
**Non-Residents with Financial Need by Income Level at the**  
**University of Missouri-St. Louis, FY09 - FY13**



Source: UIDS, PeopleSoft  
 IR&P/LCB 12/13





**Table 5.5 (Continued)**

FY09 FY10 FY11 FY12 FY13 FY09 FY10 FY11 FY12 FY13