

The 80 6\ VWHP 2dFH RI (QJDJHPHQW DQG 2XWUHDFK connects the UM System to
FRPPXQLWLHV RI 0LVVRXUL (QJDJHPHQW H[WHQGV WKH NQRZOHG
four universities across the state to build a better future.

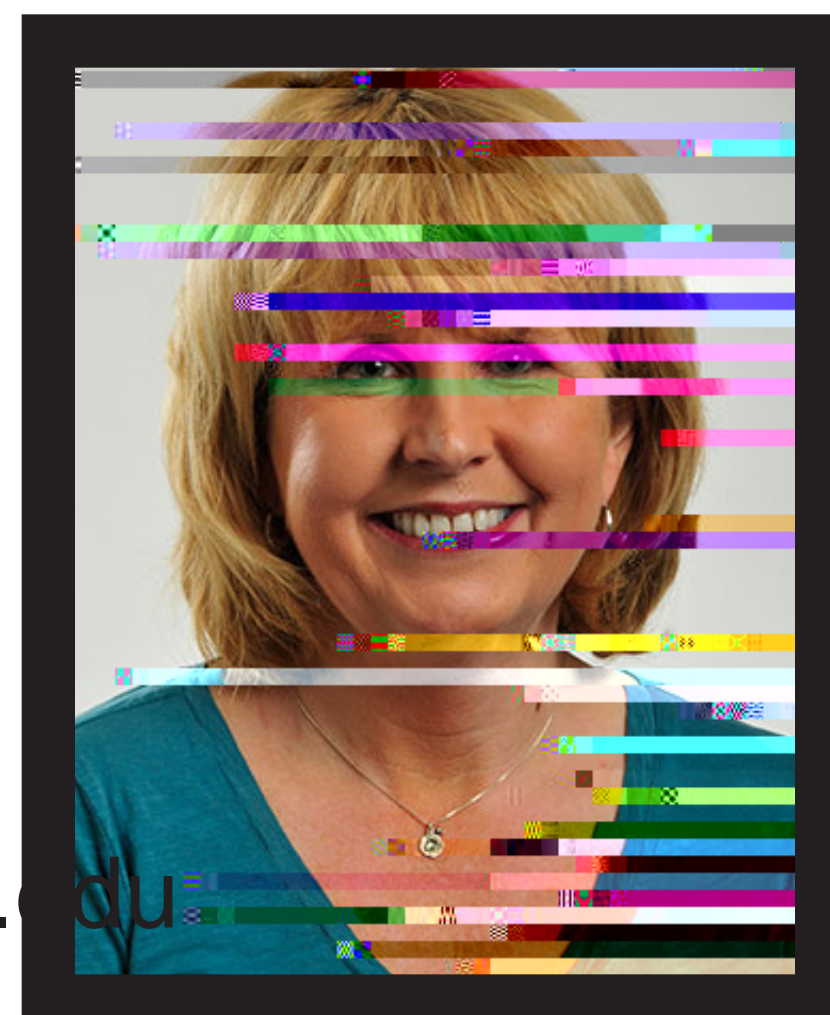
: K D W L V (Q J D J H P H Q W "

Engagement is all the ways in which the University and the greater community partner to establish a relationship of value, share information and improve the lives of those in Missouri and beyond.

The UM System Office of Engagement and Outreach recognizes, celebrates and helps facilitate the engagement that happens through daily interactions between the public and each person, unit, department, office and school at all four universities across the system. The Office of Engagement leverages these interactions and fosters even stronger ties with the citizens of Missouri through strategic engagement, which can come in many forms. For more details on what systemwide engagement means, please see the flip side of this document.

Marshall Stewart
UM System Chief
Engagement Officer

(573) 882-2394
stewartmars@umsystem.edu



Alison Copeland
UM System Deputy Chief
Engagement Officer

(573) 884-4655
copelanda@umsystem.edu



Ashley Rhode
UM System Engagement
& Outreach Associate

(573) 884-3257
rhodea@umsystem.edu



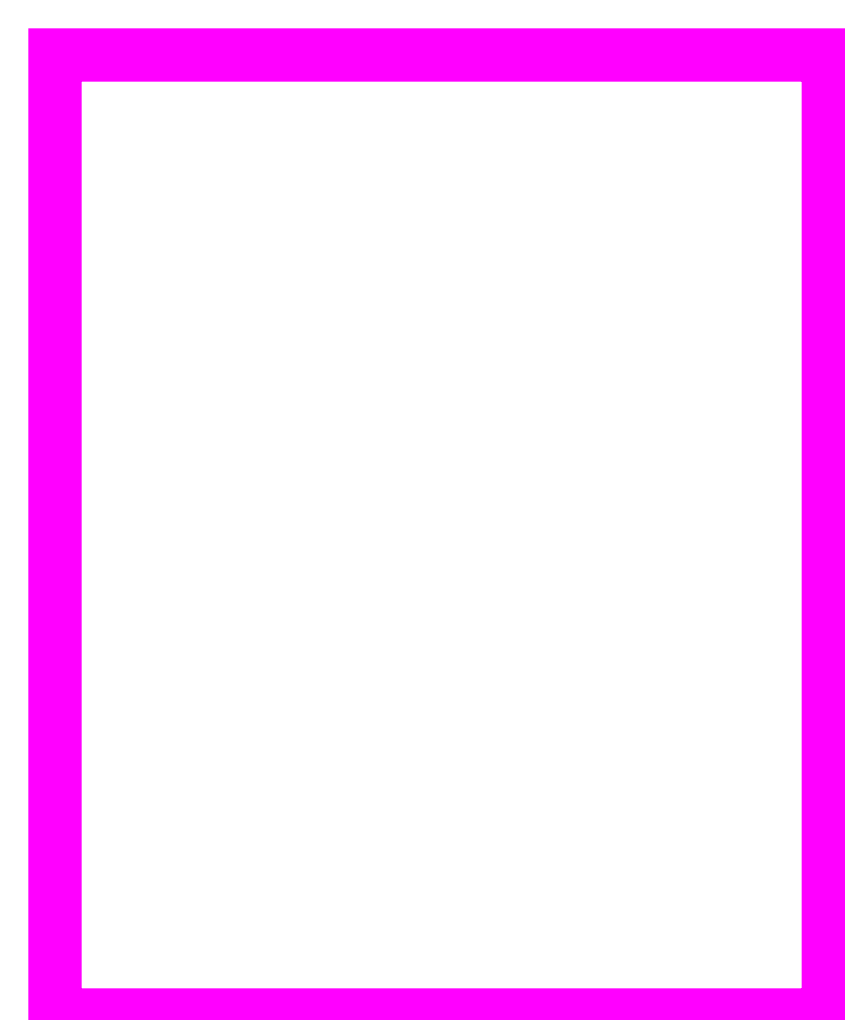
Susan Renoe
MU Assistant Vice Chancellor, Research
Extension and Engagement

(573) 882-2270
renoes@missouri.edu



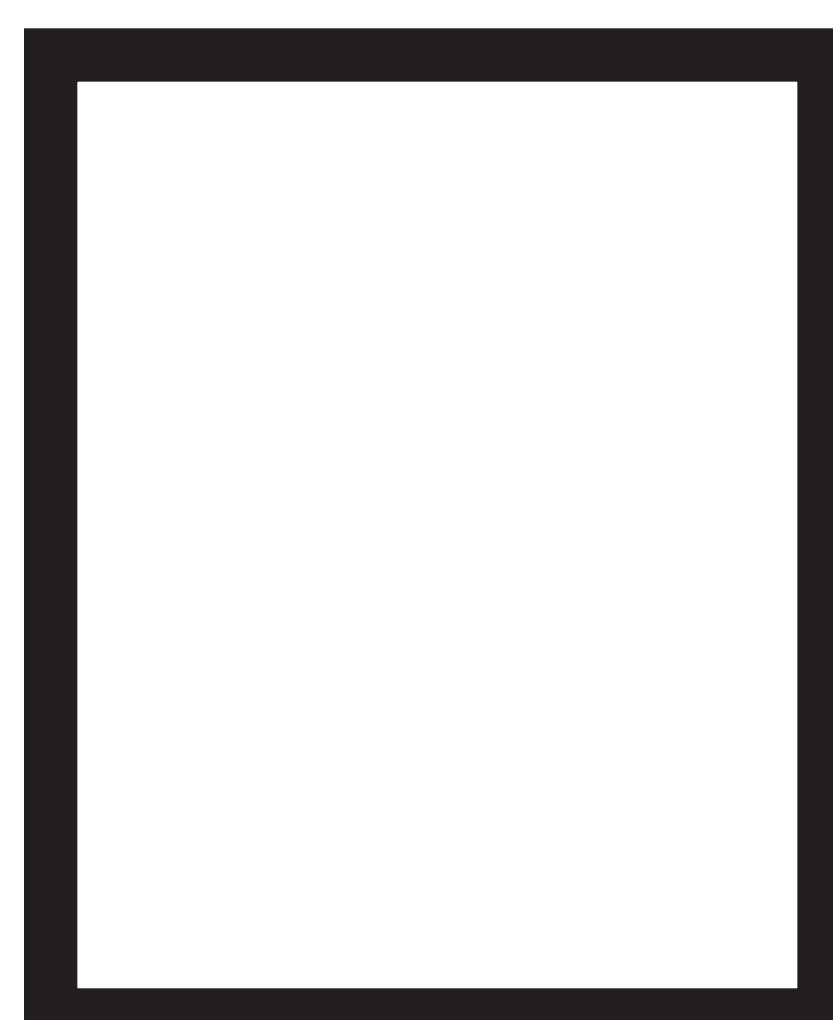
Troy Lillebo
UMKC Assistant Vice Chancellor,
External Relations

(816) 235-6585
lillebot@umkc.edu



Melanie Keeney
Missouri S&T Director, Engagement
and Outreach

(573) 341-4786
mkeeney@mst.edu



Patricia Zahn
UMSL Director, Community Outreach
and Engagement

(314) 516-5267
zahnp@umsl.edu



3 UHVLGHQWLD O (QJDJHPHQW)HOORZV

The Presidential Engagement Fellows program was established to share faculty accomplishments

ZLWK WKH FLWLJHQV RI 0LVVVRXUL LQ WKHLU RZQ FRPPXQLWLHV

FRQQHFWLRQV DQG GHOLYHU RQ RXU LPSRUWDQW PLVVLRQ WR G

RI DOO 0LVVVRXULDQV)RU PRUH LQIRUP [DnW LUs/Ref](#) DQG WKLV \HDU ¶V

(QJDJHPHQW 3RUWDOV

Every day, we are working to address the three grand challenges of economy, education and health
